

Industrial Display Systems and Panel PCs



Visualize Actionable
Intelligence at the Edge



TABLE OF CONTENT

| | |
|--|-----------|
| About ADLINK | 01 |
| ADLINK's Solutions | 02 |
| GPU Solutions | 02 |
| Industrial Touch Screen Monitors | 04 |
| Smart Panels – Open-Frame Panel PCs | 06 |
| Smart Touch Computer – Industrial Panel PCs | 08 |
| Edge AI Embedded Computers and Media Players..... | 10 |
| Vertical Solutions..... | 12 |
| Manufacturing Solutions | 12 |
| Healthcare Solutions | 14 |
| Retail Solutions | 16 |
| Transportation Solutions | 18 |
| Hospitality Solutions | 20 |

About ADLINK

Leading EDGE COMPUTING

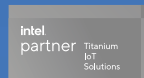
ADLINK Technology is leading edge computing with products and platforms that enable computing at the edge of the network, whether that network be the public Internet or an enterprise information technology (IT)/operational technology (OT) network. With the main goal of driving data-to-decisions, ADLINK provides solutions to connect the unconnected and simplify the design, development and deployment of Industrial Internet of Things (IIoT) applications.

Through the integration of computing power, rugged design, high availability and industrial I/O, ADLINK has made a name for itself providing reliable products of superior quality for cost-effective solutions. This allows our customers around the world to significantly reduce time-to-market (TTM) burdens while minimizing total cost-of-ownership (TCO) with customization and system integration advantages, keeping manufacturing costs low and extending product lifecycles.

ADLINK is a Titanium tier members of Intel® Partner Alliance and is active in several standards organizations and interoperability initiatives, including PCI Industrial Computer Manufacturers Group (PICMG), PXI Systems Alliance (PXISA), VMEbus International Trade Association (VITA), Standardization Group for Embedded Technologies (SGeT), European Telecommunications Standards Institute (ETSI), and Open Compute Project (OCP).

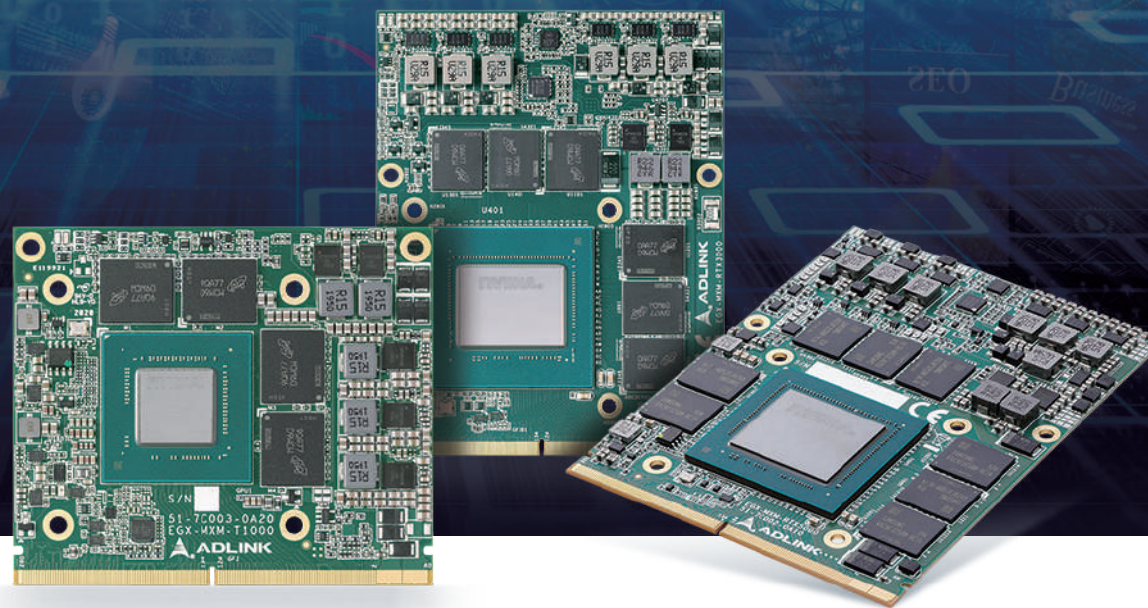
In 2018, ADLINK officially partners with NVIDIA to deliver 'AI at the Edge' solutions. Stressing ADLINK's extensive and market-proven expertise in supplying embedded and connected platforms for industrial markets such as gaming, manufacturing, telecom, defense, transportation and healthcare, this collaboration combines the strengths and core competencies of both companies in a highly synergistic way. The combination of advanced technologies provides customers with opportunities to deploy leading-edge solutions in support of operational excellence and new business models.

ADLINK is a global company with a local touch. Headquartered in Taiwan, ADLINK offers manufacturing in Taiwan and China; R&D and integration in the US, Germany, Taiwan and China; an extensive network of worldwide sales and support offices; and a continually expanding partner ecosystem. ADLINK is ISO-9001, ISO-14001, ISO-13485 and TL9000 certified and is publicly traded on the TAIEX Taiwan Stock Exchange (stock code: 6166). Our products are currently available in over 40 countries across five continents, supported by worldwide distribution networks and offices and over 1600 employees.

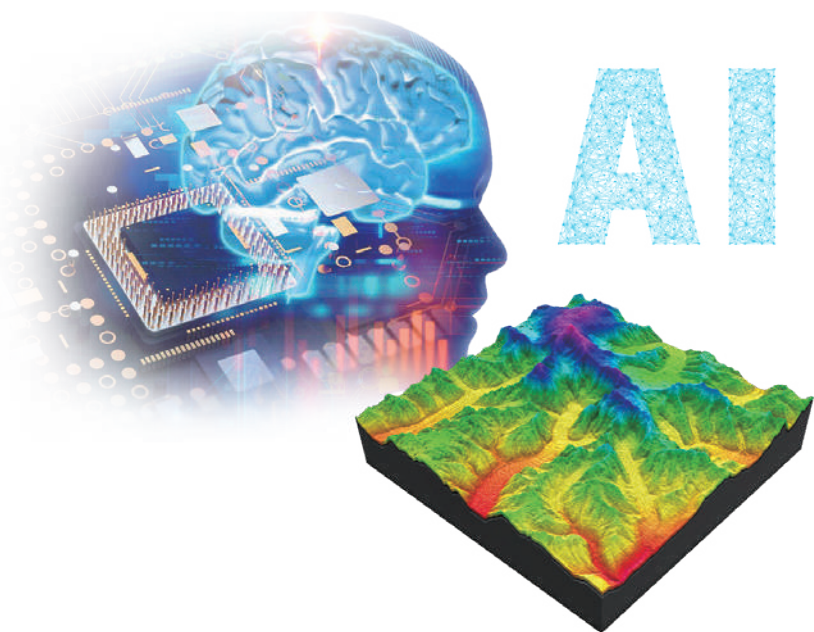


GPU Solutions

Designed to support the heavy technological demand of industrial applications, ADLINK's GPU solutions incorporate the latest NVIDIA GPU technology to take graphics processing to the next level. ADLINK's GPUs allow for accelerated rendering, AI inferencing, graphics, and computing performance, all while reducing I/O latency and improving system responsiveness. ADLINK also takes common industrial concerns into consideration, with its embedded MXM GPUs that address size, weight, and power constraints and professional PCI express graphics cards that enhance graphics quality and support high-performance computing applications. Importantly, ADLINK's GPU solutions are durable and long-lived, able to respond to the demanding needs of the healthcare, manufacturing, logistics, transportation, aerospace, telecommunications, and defense industries over a long period.



Highlighted Features

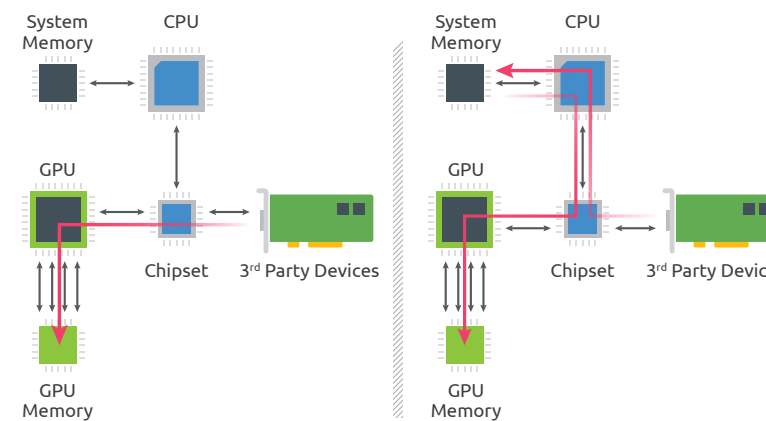
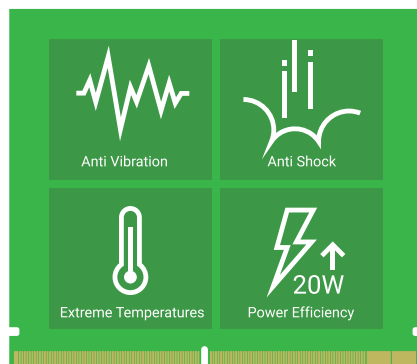


Accelerated rendering, AI, graphics, and computing performance

NVIDIA CUDA® Cores support general-purpose computing with GPU acceleration. Partnering with Tensor Cores to speed up AI interference and training, alongside RT Cores, which employ real-time ray tracing to boost cinematic image rendering performance and speed, ADLINK's GPU solutions drive better, faster results.

Compact, durable, and power-efficient MXM GPU modules

A mere one-fifth the size of PCIe graphics cards, ADLINK's MXM GPU modules minimize the footprint of the host system. The modules are designed to withstand the harsh physical conditions of an industrial environment, including vibrations, shocks, and extreme temperatures. ADLINK's MXM GPU modules are also easy on energy, with power consumption starting from just 20 watts.



Dataflow with NVIDIA GPUDirect™ RDMA

Dataflow without NVIDIA GPUDirect RDMA

PCIe 4.0 SUPPORT

High bandwidth and reduced I/O latency

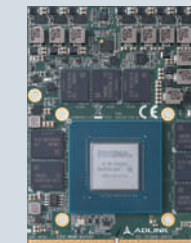
PCIe 4.0 support offers high bandwidth connection for data-intensive applications. With GPUDirect® RDMA, peripheral devices can directly access GPU memory, reducing I/O latency and increasing overall performance speed.

Long life support

ADLINK's GPU solutions support five-year product availability to meet long-term development needs and the life cycles of embedded applications.

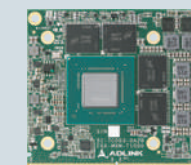


Top Products



EGX-MXM A Series

Embedded MXM GPU modules based on NVIDIA Ampere architecture



EGX-MXM T Series

Embedded MXM GPU modules based on NVIDIA Turing™ architecture



EGX-MXM P Series

Embedded MXM GPU modules based on NVIDIA Pascal™ architecture



NVIDIA Professional Graphics Solutions

PCI express graphics cards

Industrial Touch Screen Monitors

Break down the language barrier between humans and machines with ADLINK's open-frame, true-flat industrial touch screen monitors. Slim and easy to integrate into a wide array of systems, these industrial touch screen monitors offer smooth user interaction coupled with an unbeatable visual experience and the durability that industrial applications demand. ADLINK's industrial touch screen monitors are designed to streamline and automate daily operations in industries such as manufacturing, healthcare, retail, public transport, and hospitality, enhancing operational efficiency.

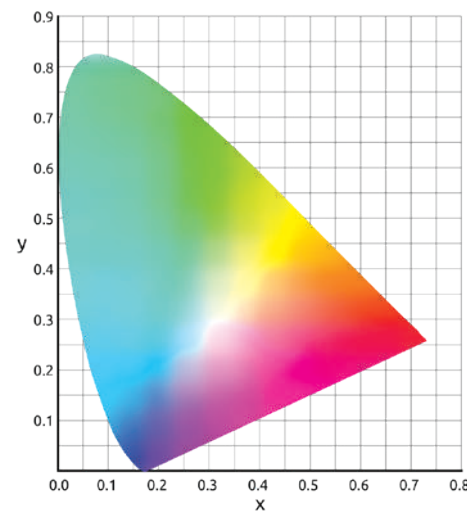


Highlighted Features



Smooth user interaction

ADLINK's projected capacitive technology supports 10-point multi-touch capabilities for smooth zoom, flick, rotate, swipe, drag, pinch, press, double tap, and other functions.

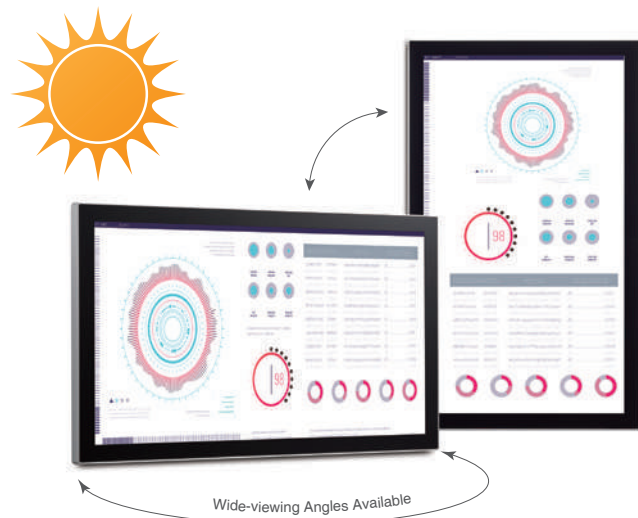


High readability

ADLINK's industrial touch screen monitors are optimized for outdoor or semi-outdoor use thanks to their high brightness and sunlight readability features. The screen surface is treated with an anti-fingerprint solution to facilitate cleaning and maximize readability, and with wide-viewing angles available, these monitors support both portrait and landscape orientations.

Immersive visuals

Easily adjust gamma correction, color saturation, brightness, contrast, and color balance with software programmable color management to reveal the true colors of stunning visuals.



High durability

Protected with 7H hardness and an IP65 front panel, ADLINK's industrial touch screen monitors can easily stand up to the hazards of harsh environments, such as water, dust ingress, scratches, abrasions, and metallic dust. On average, these monitors have a mean time before failure (MTBF) of up to 50,000 hours, minimizing maintenance costs.

Slim and light

The slim, light frame enables seamless integration and installation for any application.



Top Products



OM Series

Open-frame industrial touch screen monitors



IM Series

True-flat industrial touch screen monitors

Smart Panels – Open-Frame Panel PCs

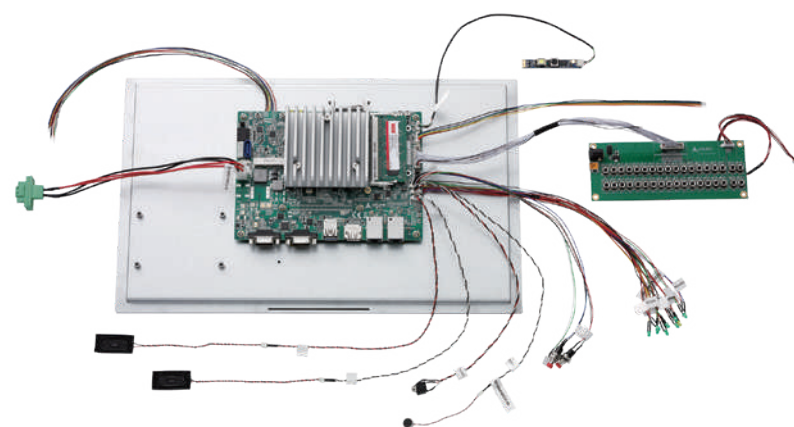
With flexible configuration with a high level of modularization, ADLINK Smart Panels help system integrators, integrated solution providers, and brand vendors deliver cutting-edge functions unique to individual applications. Leveraging ADLINK's unique Function Module (FM) design, these panels accelerate prototyping according to the requirements of the application while saving time, money, and effort. ADLINK's Smart Panels are an ideal fit for transportation, retail, hospitality, industrial automation, healthcare, gaming, and other industries.



Highlighted Features

Flexible configuration with advanced modularization

ADLINK Smart Panels can be easily tailored to application needs through customization of the computing performance, touch panel type, display size, and I/O interface. The Smart Panel's function modules support application-specific functions, and this modular architecture fast-tracks development, verification, and validation, resulting in significant savings in time, money, and resources.



Endless possibilities with unique function modules

With function modules, ADLINK's Smart Panels can be configured with custom functions and interfaces to seamlessly meet the needs of any vertical application. Connected by a board-to-board connector, function modules offer guaranteed compatibility with ADLINK Smart Panels, which decreases R&D overhead and costs.



Long-term reliability and durability

ADLINK Smart Panels is robust for use in harsh operating environments. The wide temperature and power input ranges allow the Smart Panel to withstand poorly ventilated conditions, transient power spikes, and voltage fluctuations, while the IP65-rated front panel can deter water and dust ingress. Designed with long-term usability in mind, these Smart Panels offer clients peace of mind, alleviating worries related to system reliability after deployment or long-term supply availability.



Top Products



SP-TGL

Open-frame industrial panel PCs powered by 11th generation Intel® Core™ processor



SP-KL

Open-frame industrial panel PCs powered by 7th generation Intel® Core™ processor



SP-AL

PCI express graphics cards Open-frame industrial panel PCs powered by Intel Atom® processor E3900 series

Smart Touch Computer – Industrial Panel PCs

ADLINK's Smart Touch Computer (STC) series is ideal for human-machine interface (HMI) applications in the food and beverage, pulp and paper, textile, printing, word processing, and other industries. These industrial-grade panel PCs are designed for optimized production control and monitoring, offering scalable performance, customizability, and I/O expansion. With an industrial-grade, robust construction, these panel PCs are designed for long-time operation, allowing manufacturers to effortlessly obtain time-sensitive sensor data and easily monitor and control manufacturing processes.



Highlighted Features



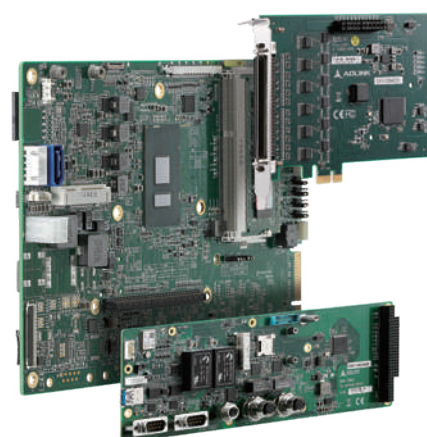
Endless possibilities with deep customization

ADLINK's STC panel PCs can be tailored to meet the unique needs of individual vertical applications through custom functions and interfaces.



Flexible configuration with advanced modularization

Manufacturers can easily customize the STC series panel PCs for application-specific I/O and functionality, changing the level of computing performance, touch panel type, display size, and I/O interface. This customization accelerates development, verification, and validation, leading to saved time, money, and resources for any manufacturer.



Long-term durability and reliability

The ADLINK STC series delivers a high ROI with its long life support and long-term reliability. Even in harsh environments with extreme temperatures or power input ranges, these panel PCs thrive thanks to their built-in overvoltage and undervoltage protection and their IP65-rated front panel. The computers alleviate worries about system reliability after deployment or long-term supply availability.



Narrow bezel and slim design

The slim, lightweight frame allows for effortless integration and installation into any application, improving cost efficiency while looking stylish.



Various mounting options

With support for VESA mounting and desk stands, ADLINK's STC panel PCs offer an abundance of mounting options. They can even be embedded into control consoles for ultimate convenience.

Top Products



STC-KL

Industrial panel PCs powered by 7th generation Intel® Core™ processor



STC-TGL

Industrial panel PCs powered by 11th generation Intel® Core™ processor



STC-AL

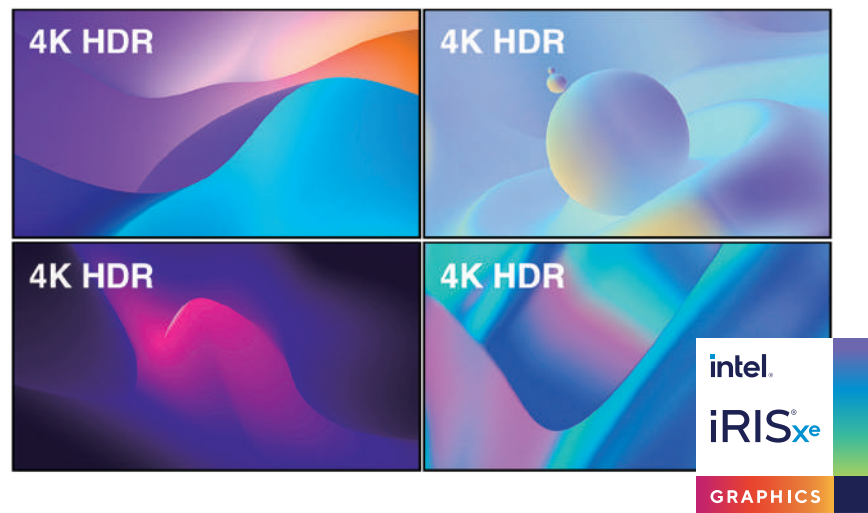
Industrial panel PCs powered by Intel Atom® processor E3900 series

Edge AI Embedded Computers and Media Players

The perfect solution for the retail and infotainment industries, ADLINK's edge AI embedded computers and media players capture more foot traffic and improve business efficiency. These edge AI embedded computers deliver immersive visuals, ideal for eye-catching promotional content. With AI-driven computer vision and video analysis that reveals in-depth visitor demographics and business insights, these edge AI embedded computers and media players also help retailers tailor their sales strategies to drive increased revenue. These compact, fanless devices allow for easy and discreet installation on the back of a display, delivering performance from behind the scenes.



Highlighted Features



Mesmerizing video graphics

With Intel Iris® X^e graphics, ADLINK's edge AI embedded computers and media players support 8K UHD video capabilities for awe-inspiring visual details and up to 40 simultaneous streams of 1080p 30-fps video content. The devices are highly compatible with video wall setups, with multi-display configuration for up to 4x channels of 4K HDR video content.

Compact and fanless

ADLINK's embedded computers and media players deliver results with high power efficiency, with the ability for passive cooling minimizing the need for post-deployment support and maintenance and ensuring a small footprint.

AI-driven video analysis and computer vision

Advanced facial, speech, and object recognition and multi-modal sensor data fusion, driven by state-of-the-art deep learning technology, take business analytics to the next level.



High Energy Efficiency



Fanless Design



Compact Size

Top Products



EMP-300-TGL

Edge AI embedded computers and media players powered by 11th generation Intel® Core™ i3 processors



EMP-500-TGL

Edge AI embedded computers and media players powered by 11th generation Intel® Core™ i5 processors



Manufacturing Solutions

Monitor and Control Processes and Ensure Production Quality

Manufacturers rely on human-machine interfaces to monitor and control manufacturing processes and ensure production quality, and ADLINK delivers precisely the high-end solutions manufacturers need. ADLINK's reliable solutions help manufacturers easily configure production settings, monitor machine conditions, track production times and trends, and check machine inputs and outputs, which results in a more streamlined manufacturing process. ADLINK's solutions leverage the power of AI-driven computer vision to identify errors or defects in critical processes, enhancing quality assurance. These machines also enable paperless SOPs to provide step-by-step instructions, thereby improving the efficiency and accuracy of operations. Finally, ADLINK products are built to withstand the demands of harsh environments and are durable against liquid, dust, debris, extreme temperatures, and other common environmental factors in industrial environments.

Highlighted Applications



Factory control panels



Machine control



Product status monitoring and control



Automated optical inspection



Paperless SOPs

Recommended Products



IM Series

True-flat industrial touch screen monitors



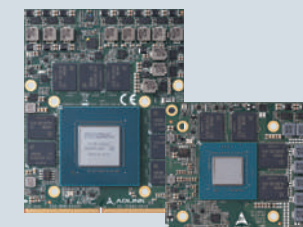
Smart Panel Series

Open-frame panel PCs



Smart Touch Computer Series

Industrial panel PCs



EGX MXM Series

Embedded MXM GPU modules



NVIDIA Professional Graphics Solutions

PCI express graphics cards



Highlighted Applications



Medical imaging equipment



Medical devices



Laboratory analyzers



Automated pharmacy systems



Clinical service kiosks

Healthcare Solutions

Medical Instruments to Advance Clinical Care Delivery

Technology has long been driving breakthroughs in the healthcare industry, lengthening lifespans, detecting major illnesses early, and improving patient outcomes. ADLINK's solutions enable medical devices, laboratory analyzers, pharmacy automation systems, and self-service kiosks to work hard behind the scenes, aiding healthcare professionals in their laborious efforts to diagnose and treat patients and achieve scientific breakthroughs. ADLINK's solutions deliver medical images with cutting-edge quality, accelerate laboratory analyses and clinical diagnoses, and automate everyday clinical tasks, streamlining clinical operations. ADLINK's solutions are built with high durability and are easy to clean, meeting the strict infection prevention and control protocols followed by healthcare providers without compromising on speed and quality.

Recommended Products



OM Series

Open-frame industrial touch screen monitors



Smart Panel Series

Open-frame panel PCs



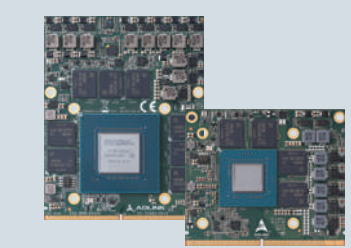
Smart Touch Computer Series

Industrial panel PCs



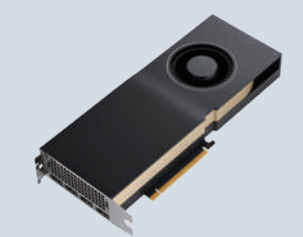
EMP Series

Edge AI embedded computers and media players



EGX MXM Series

Embedded MXM GPU modules



NVIDIA Professional Graphics Solutions

PCI express graphics cards



Retail Solutions

Increase Foot Traffic and Expand Business Reach

ADLINK's state-of-the-art technological solutions can revolutionize a retail business. Crisp digital signage expertly captures visitor attention, and self-service kiosks facilitate retail operations, freeing up human resources for other value-added tasks. ADLINK's retail solutions offer versatile functionality, allowing businesses to set up a mesmerizing video wall to air advertisements or personalized offerings in breathtakingly realistic UHD, deploy user identification for increased security and personalization, facilitate payment transactions, dispense merchandise, and print receipts, to name just a few use cases. What's more, ADLINK's solutions are specifically designed for reliability and durability, running 24/7 no matter the weather, temperature, and installation environment.

Highlighted Applications



Intelligent digital signage



Self-ordering machines



Self-checkout kiosks



AI assistants



Information kiosks

Recommended Products



OM Series

Open-frame industrial touch screen monitors



Smart Panel Series

Open-frame panel PCs



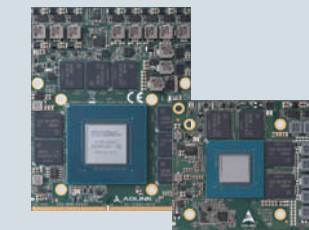
Smart Touch Computer Series

Industrial panel PCs



EMP Series

Edge AI embedded computers and media players



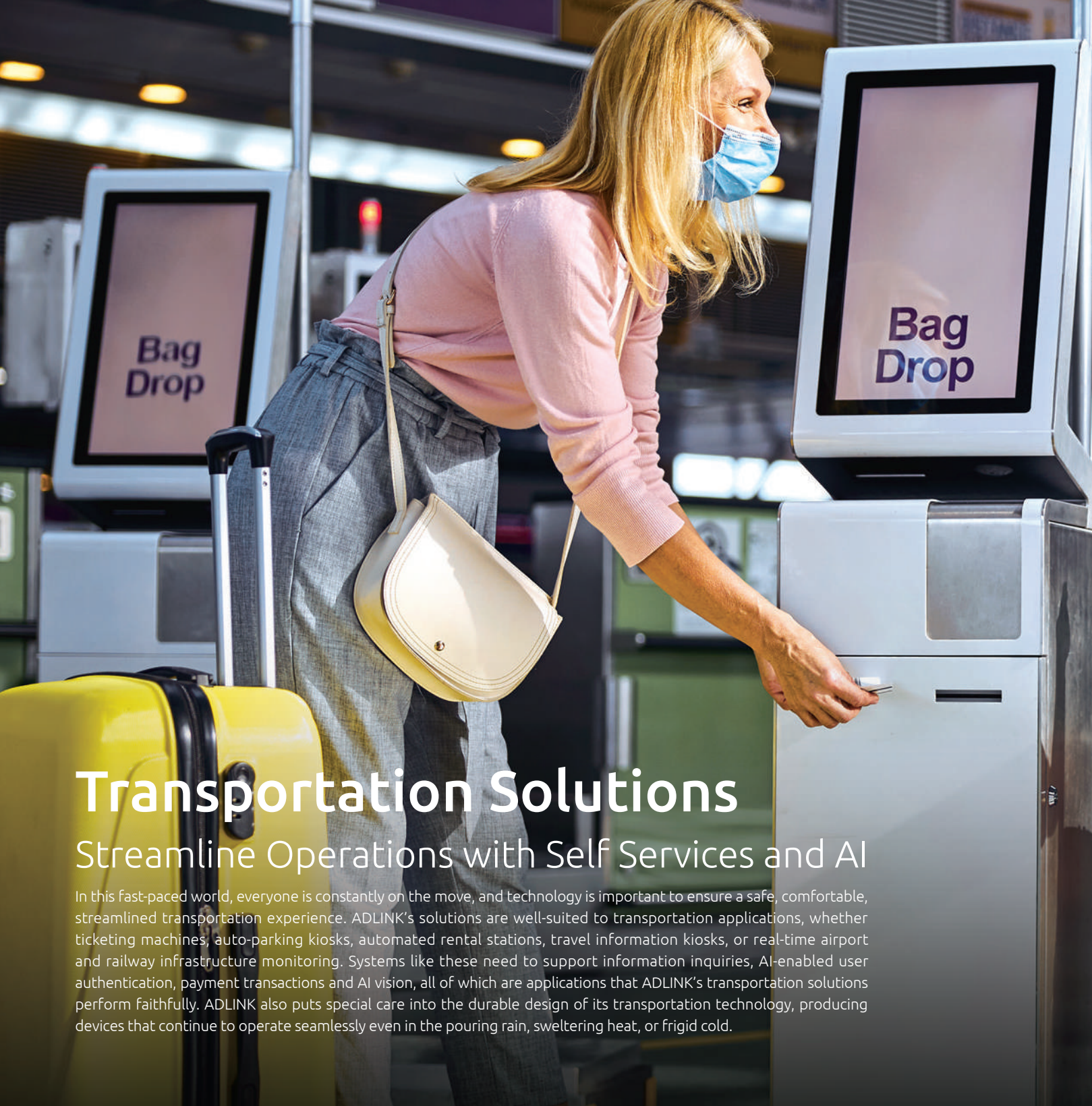
EGX MXM Series

Embedded MXM GPU modules



NVIDIA Professional Graphics Solutions

PCI express graphics cards



Transportation Solutions

Streamline Operations with Self Services and AI

In this fast-paced world, everyone is constantly on the move, and technology is important to ensure a safe, comfortable, streamlined transportation experience. ADLINK's solutions are well-suited to transportation applications, whether ticketing machines, auto-parking kiosks, automated rental stations, travel information kiosks, or real-time airport and railway infrastructure monitoring. Systems like these need to support information inquiries, AI-enabled user authentication, payment transactions and AI vision, all of which are applications that ADLINK's transportation solutions perform faithfully. ADLINK also puts special care into the durable design of its transportation technology, producing devices that continue to operate seamlessly even in the pouring rain, sweltering heat, or frigid cold.

Highlighted Applications



Automated ticket machines



Auto-parking kiosks



Automated bicycle rental machines



Passenger information signage



Airport/Railway infrastructure monitoring

Recommended Products



OM Series

Open-frame industrial touch screen monitors



Smart Panel Series

Open-frame panel PCs



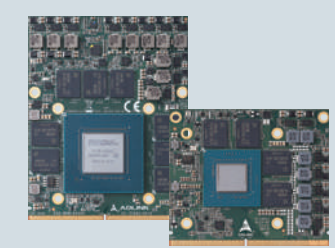
Smart Touch Computer Series

Industrial panel PCs



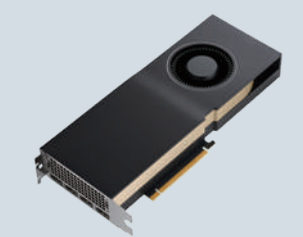
EMP Series

Edge AI embedded computers and media players



EGX MXM Series

Embedded MXM GPU modules



NVIDIA Professional Graphics Solutions

PCI express graphics cards



Hospitality Solutions

Automate Operations to Drive Further Business Success

ADLINK technology is a boon to the hospitality industry, helping hotels, restaurants, libraries, and other hospitality-oriented businesses automate and streamline their operational processes. With ADLINK's solutions, hotel guests can check themselves in, library visitors can check out books on their own, and customers of postal or delivery services can pick up their own delivery packages. Automated systems powered by ADLINK's solutions can also allow restaurants to automate food delivery. With their responsive user interface, AI-augmented identification and authentication functionality, and durable construction, ADLINK's solutions offer long life support, maximizing ROI for hospitality businesses.

Highlighted Applications



Hotel check-in kiosks



Room service robots



Delivery robots



Self-pickup kiosks



Self-checkout library kiosks

Recommended Products



OM Series

Open-frame industrial touch screen monitors



Smart Panel Series

Open-frame panel PCs



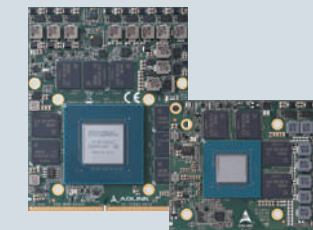
Smart Touch Computer Series

Industrial panel PCs



EMP Series

Edge AI embedded computers and media players



EGX MXM Series

Embedded MXM GPU modules



NVIDIA Professional Graphics Solutions

PCI express graphics cards

Head Office

ADLINK Technology, Inc.

No. 66, Huaya 1st Rd., Guishan Dist.,
Taoyuan City 333411, Taiwan
333411 桃園市龜山區華亞一路 66 號
Tel: +886-3-216-5088
Fax: +886-3-328-5706
Email: service@adlinktech.com

   www.adlinktech.com

Worldwide Offices

Ampro ADLINK Technology, Inc.

6450 Via Del Oro, San Jose, CA 95119, USA
Tel: +1-408-360-0200
Toll Free: +1-800-966-5200 (USA only)
Fax: +1-408-600-1189
Email: info@adlinktech.com

ADLINK Technology Singapore Pte, Ltd.

84 Genting Lane #07-02A, Axxel Innovation Centre,
Singapore 349584
Tel: +65-6844-2261
Fax: +65-6844-2263
Email: singapore@adlinktech.com

ADLINK Technology Singapore Pte. Ltd. (Indian Liaison Office)

#50-56, First Floor, Spearhead Towers, Margosa Main
Road (between 16th/17th Cross),
Malleswaram, Bangalore - 560 055, India
Tel: +91-80-42246107, +91-80-23464606
Fax: +91 80 23464606
Email: india@adlinktech.com

ADLINK Technology Japan Corporation

〒101-0045 東京都千代田区神田鍛冶町 3-7-4,
KDX 神田駅前ビル 4F
KDX Kanda Ekimae Bldg. 4F, 3-7-4 Kanda Kajicho,
Chiyoda-ku, Tokyo 101-0045, Japan
Tel: +81-3-4455-3722
Fax: +81-3-5209-6013
Email: japan@adlinktech.com

ADLINK Technology Japan Corporation (Nagoya office)

〒450-0002 愛知県名古屋市中村区名駅 5-31-10
リンクス名駅ビル 3F
LINKS Meieki Bldg. 3F, 5-31-10 Meieki, Nakamura-ku,
Nagoya-city, Aichi 450-0002, Japan
Tel: +81-52-589-9018
Fax: +81-52-583-2807
Email: japan@adlinktech.com

ADLINK Technology Korea Ltd.

경기도 용인시 수지구 신수로 767 A 동 1503 호
(동전동 , 분당수지유타워) (우) 16827
Toll Free: +82-80-800-0585
Tel: +82 31 786-0585
Fax: +82 31 786-0583
Email: korea@adlinktech.com

ADLINK Technology (China) Co., Ltd.

上海市浦东新区张江高科技园区芳春路 300 号 (201203)
300 Fang Chun Rd., Zhangjiang Hi-Tech Park,
Pudong New Area, Shanghai, 201203 China
Tel: +86-21-5132-8988
Fax: +86-21-5192-3588
Email: market@adlinktech.com

ADLINK Technology Beijing

北京市海淀区上地东路 1 号盈创动力大厦 E 座 801 室
(100085)
Rm. 801, Power Creative E, No. 1 Shang Di East Rd.
Beijing, 100085 China
Tel: +86-10-5885-8666
Fax: +86-10-5885-8626
Email: market@adlinktech.com

ADLINK Technology Shenzhen

深圳市南山区科技园南区高新南七道数字技术园 A1 栋
2 楼 C 区 (518057)
2F, C Block, Bldg. A1, Cyber-Tech Zone, Gao Xin Ave. Sec. 7
High-Tech Industrial Park S., Shenzhen, 518054 China
Tel: +86-755-2643-4858
Fax: +86-755-2664-6353
Email: market@adlinktech.com

ADLINK Technology GmbH

Hans-Thoma-Straße 11, 68163 Mannheim, Germany
Tel: +49 621 43214-0
Fax: +49 621 43214-30
Email: emea@adlinktech.com

ADLINK Technology SARL

Bâtiment Thalès – Parc des Algorithmes,
Route de l'Orme des Merisiers,
91190 Saint-Aubin, France
Tel: +33 (0) 1 60 12 35 66
Fax: +33 (0) 1 60 12 35 66
Email: france@adlinktech.com

ADLINK Technology, Inc. (UK Liaison Office)

First Floor West Exeter House, Chichester Fields
Business Park Tangmere, West Sussex,
PO20 2FU, United Kingdom
Tel: +44-1243-859677
Email: UK@adlinktech.com

ADLINK Technology, Inc.

(Israel Liaison Office)
MIXER Herzliya (Building B, 9 Floor) 3 Arik Einstein st.
Zip code 4610301, Herzliya, Israel
P.O.Box - 351
Tel: +972-54-632-5251
Fax: +972-77-208-0230
Email: israel@adlinktech.com





Authorized Distributor

wdsystems.com

sales@wdsystems.com

800-548-2319

919-545-2500

220 Chatham Business Drive
Pittsboro, NC 27312