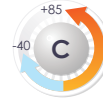
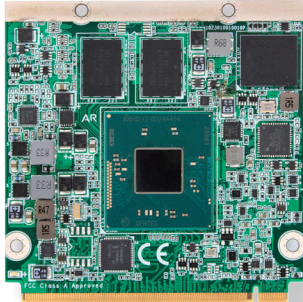


QSM-662E



Wide-Range Temperature Intel® Atom™ Processor E3800 family Qseven® R1.2 CPU Module



Features

- Fanless Design
- Soldered Onboard Intel® Atom™ Processor E3800 family
- Integrated Gigabit Ethernet
- Soldered Onboard eMMC (OEM Request)
- Dual Channels 24-bit LVDS, Analog RGB and DDI Port
- Wide-Range Operating Temp.: -40 ~ 85°C

System

Processor	Soldered onboard Intel® Atom™ Processor E3800 family E3825 1.33GHz or E3845 1.91GHz
Memory	Soldered onboard 2GB DDR3L SDRAM
BIOS	Insyde BIOS
Watchdog Timer	1~255 levels reset

I/O

USB 2.0	8 x USB 2.0 ports (Port 0~3 support USB 2.0 only)
Expansion	3 x PCIe1, I2C
Storage	2 x Serial ATA ports with 300MB/s HDD transfer rate, 4GB/8GB/16GB eMMC 4.5 (OEM Request)
Ethernet Chipset	1 x Intel® i210IT PCIe GbE controller
Audio	HD Link

Display

Graphics Chipset	Integrated Intel® Gen7 Graphic
Graphics Interface	Analog RGB/DVI: Analog RGB (via RSV pin), with resolution up to 2048x1536 LCD: Dual Channel 24-bit LVDS, with resolution up to 1920x1200 DDI port: 1 x DDI port

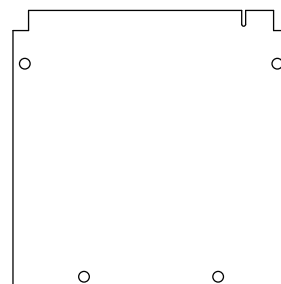
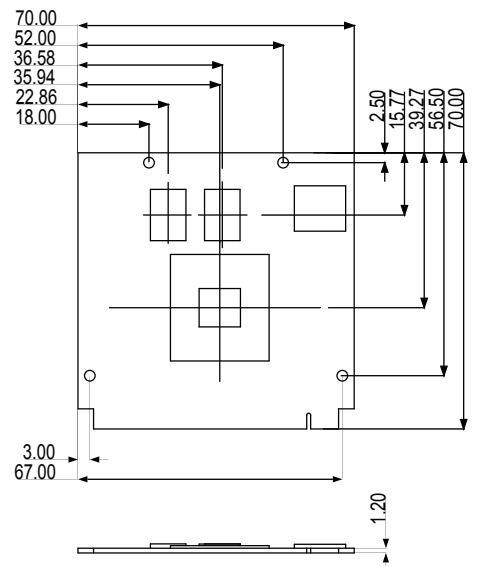
OS Support

Windows 7 32-bit/64-bit
Windows 8.1 32-bit/64-bit
Linux: Ubuntu

Mechanical & Environmental

Power Requirement	DC 5V, 5VSB
Power Consumption	0.93A@12V with E3825 (Typical, with PBQ-3000)
Operating Temp.	-40 ~ 85°C (-40 ~ 185°F)
Operating Humidity	10 ~ 95% @ 85°C (non-condensing)
Dimension (L x W)	70 x 70 mm (2.76" x 2.76")

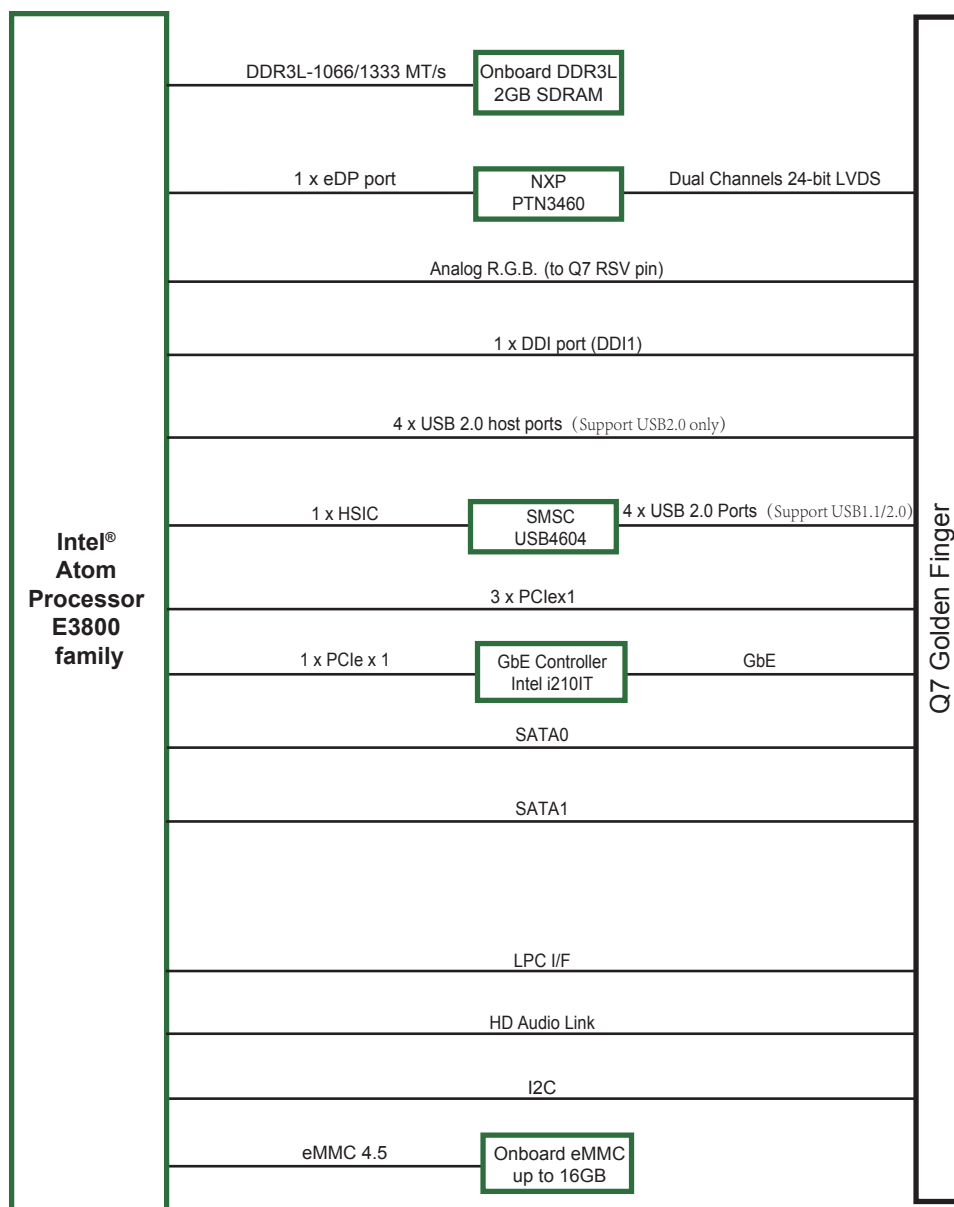
Dimensions



Unit:mm



Block Diagram



Ordering Information

QSM-662E-E3825-2G (BTO)	Intel® Atom™ Processor E3825 WT Qseven® CPU module with 2GB memory soldered on module
QSM-662E-E3845-2G (BTO)	Intel® Atom™ Processor E3845 WT Qseven® CPU module with 2GB memory soldered on module
QSM-662E-E3845-4G (BTO)	Intel® Atom™ Processor E3845 WT Qseven® CPU module with 4GB memory soldered on module

Optional Accessories

HS-0662-F1	Heat spreader 70x65x8mm
HS-0000-W3	Universal evaluation heat sink kit with thermal pad 70*65*29.8mm, only used on a flat-type heat spreader
PBQ-3000	Qseven® R1.2 carrier board in EPIC form factor
SCDB-5291	Battery Charger DB
CBK-06-3000-00	Cable kit 1 x USB cable 1 x USB2 cable 2 x Serial port cables 1 x SATA cable 1 x SATA power cable