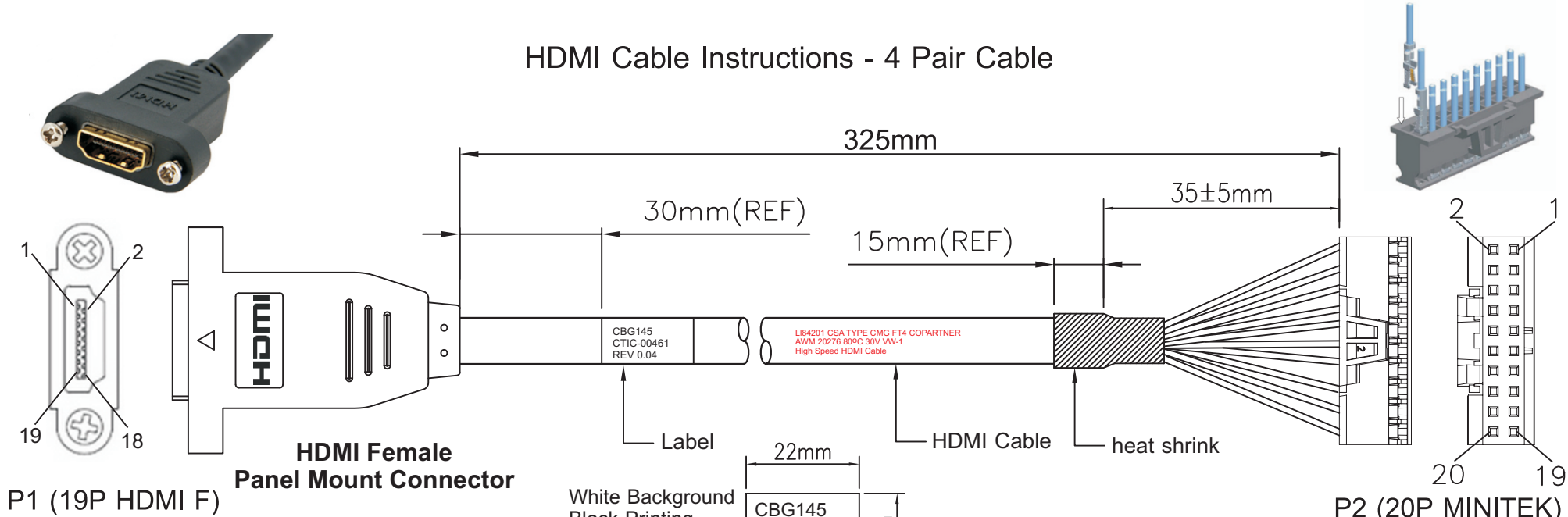


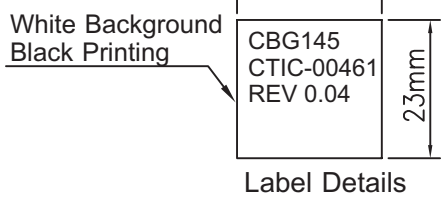
HDMI Cable Instructions - 4 Pair Cable



P1 (19P HDMI F)

HDMI Female Panel Mount Connector

P2 (20P MINITEK)
FCI MiniTek 20-pin Active Latch Housing 10073599-020LF



PINOUT TABLE


P1		P2	
1	—	1	RED
3	—	3	WHITE (RED)
2	—	5	BLACK (RED)
4	—	7	BROWN
6	—	9	WHITE (BROWN)
5	—	6	BLACK (BROWN)
7	—	13	GREEN
9	—	15	WHITE (GREEN)
8	—	11	BLACK (GREEN)
10	—	2	BLUE
12	—	4	WHITE (BLUE)
11	—	12	BLACK (BLUE)
16	—	8	PINK
15	—	10	GREY
17	—	16	YELLOW
19	—	14	RED
13	—x NC	NC x—	17
14	—x NC	NC x—	18
18	—	19	ORANGE
		20	ORANGE

Assembly Notes

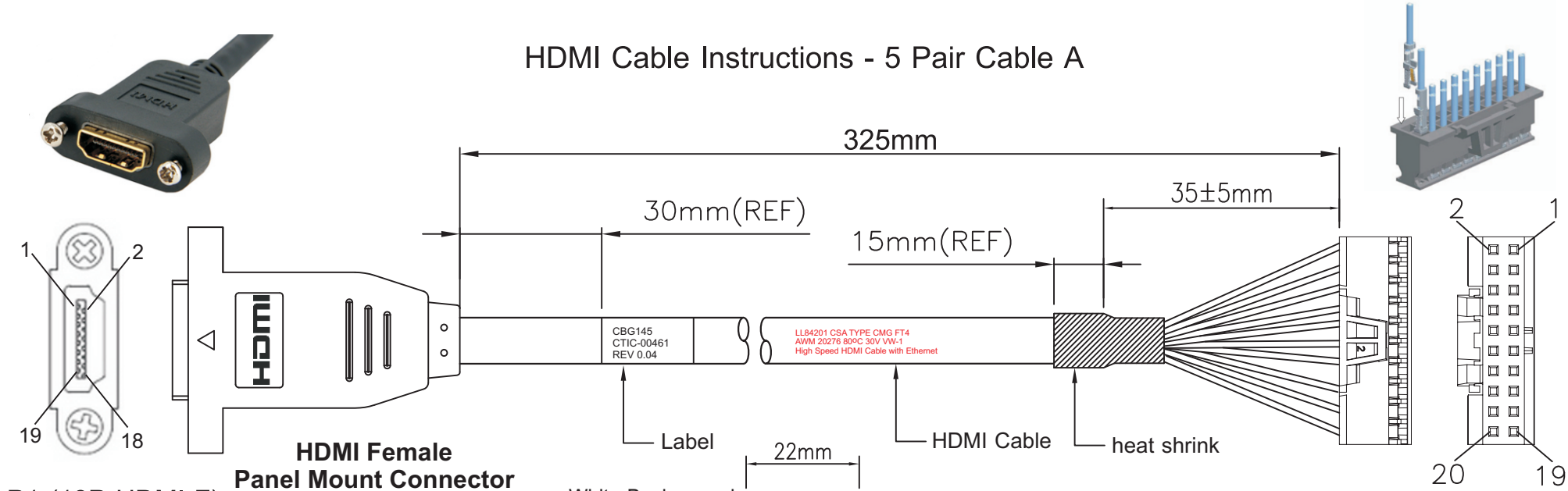
- Determine which Raw Cable Variant you have
 - Verify UL/CSA Text Matches Drawing
 - Check Connectivity of Pairs 1, 2, 3 to Validate Colours
- Cable is made from RoHS compliant components, must be HDMI compliant and wires must be 26-30 AWG
- P1- Any HDMI Female Panel Mount connector/cable equivalent can be used including:
 - Startech PN: HDMIPNLFM3 << Preferred Cable (Colour Matching on Left)
 - Adafruit PN: 978
 - Cable Leader PN: HM112-1203
 - L-com PN: PMHDMF-0.5
- P2 - Must use a FCI PN:10073599-020LF connector, along with required FCI crimps PN:77138
- Two twists per pair are required at P2 end of cable

Revision History

Revision	Description
0.01	Connected HDMI +5V Power to FCI Pins 19/20
0.02	Added Secondary Drawing (5 Pair vs 4 Pair)
0.03	Fixed Label Details on Cable
0.04	Added New Cable Variants

 Connect Tech Inc. Embedded Computing Experts	
Part #:	CTIC-00461 / CBG145
Drawn By:	Tomas Chester
Date:	2017/09/12
Revision:	0.04
	1 / 4

HDMI Cable Instructions - 5 Pair Cable A

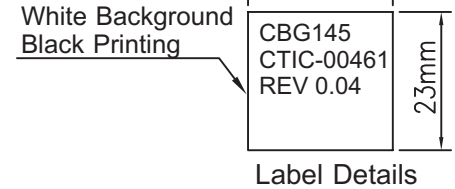


P1 (19P HDMI F)
HDMI Female Panel Mount Connector

P2 (20P MINITEK)
FCI MiniTek 20-pin Active Latch Housing 10073599-020LF

PINOUT TABLE

P1		P2	
1	—	1	BROWN
3	—	3	WHITE (BROWN)
2	—	5	BLACK (BROWN)
4	—	7	GREEN
6	—	9	WHITE (GREEN)
5	—	6	BLACK (GREEN)
7	—	13	RED
9	—	15	WHITE (RED)
8	—	11	BLACK (RED)
10	—	2	BLUE
12	—	4	WHITE (BLUE)
11	—	12	BLACK (BLUE)
16	—	8	WHITE
15	—	10	YELLOW
17	—	16	BLACK (ORANGE)
19	—	14	WHITE (ORANGE)
13	—x NC ORANGE	NC x—	17
14	—x NC ORANGE	NC x—	18
18	—	19	RED
		20	RED




Assembly Notes

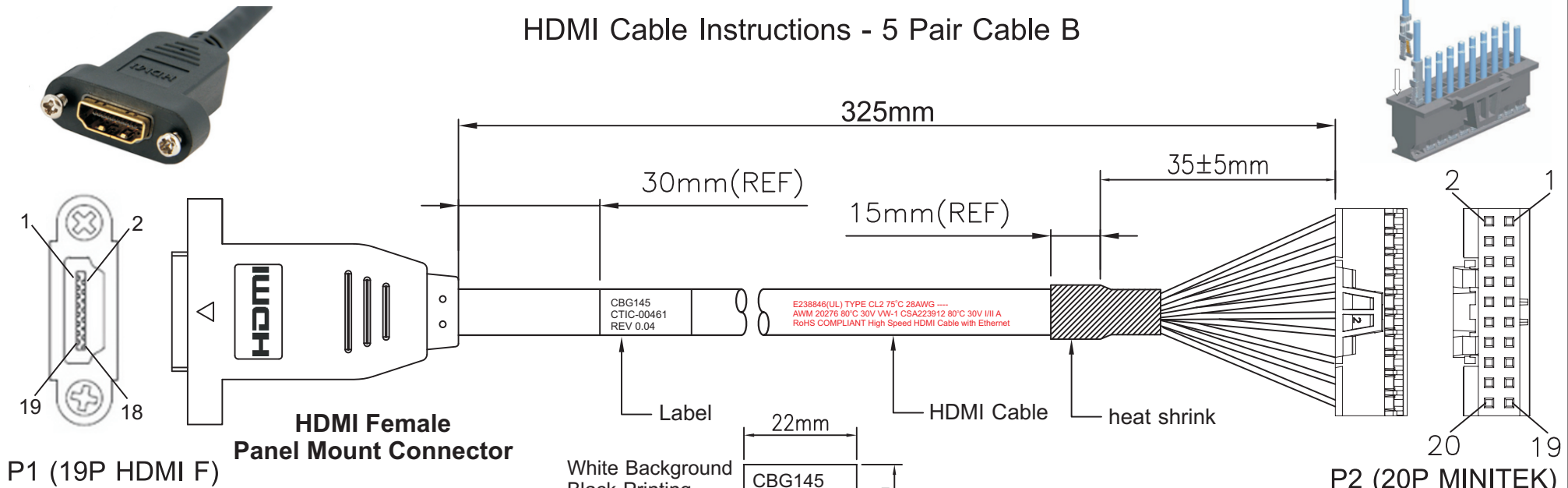
- Determine which Raw Cable Variant you have
 - Verify UL/CSA Text Matches Drawing
 - Check Connectivity of Pairs 1, 2, 3 to Validate Colours
- Cable is made from RoHS compliant components, must be HDMI compliant and wires must be 26-30 AWG
- P1- Any HDMI Female Panel Mount connector/cable equivalent can be used including:
 - Startech PN: HDMIPNLFM3 << Preferred Cable (Colour Matching on Left)
 - Adafruit PN: 978
 - Cable Leader PN: HM112-1203
 - L-com PN: PMHDMF-0.5
- P2 - Must use a FCI PN:10073599-020LF connector, along with required FCI crimps PN:77138
- Two twists per pair are required at P2 end of cable

Revision History

Revision	Description
0.01	Connected HDMI +5V Power to FCI Pins 19/20
0.02	Added Secondary Drawing (5 Pair vs 4 Pair)
0.03	Fixed Label Details on Cable
0.04	Added New Cable Variants

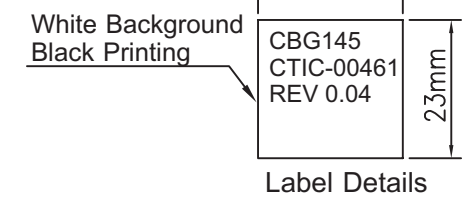
 Connect Tech Inc. <i>Embedded Computing Experts</i>	
Part #:	CTIC-00461 / CBG145
Drawn By:	Tomas Chester
Date:	2017/09/12
Revision:	0.04
	2 / 4

HDMI Cable Instructions - 5 Pair Cable B



PINOUT TABLE

P1		P2	
1	—	1	RED
3	—	3	WHITE (RED)
2	—	5	BLACK (RED)
4	—	7	BROWN
6	—	9	WHITE (BROWN)
5	—	6	BLACK (BROWN)
7	—	13	ORANGE
9	—	15	WHITE (ORANGE)
8	—	11	BLACK (ORANGE)
10	—	2	GREEN
12	—	4	WHITE (GREEN)
11	—	12	BLACK (GREEN)
16	—	8	ORANGE
15	—	10	YELLOW
17	—	16	BLACK (BLUE)
19	—	14	WHITE (BLUE)
13	—x NC RED	NC x—	17
14	—x NC BLUE	NC x—	18
18	—	19	WHITE
		20	WHITE




Assembly Notes

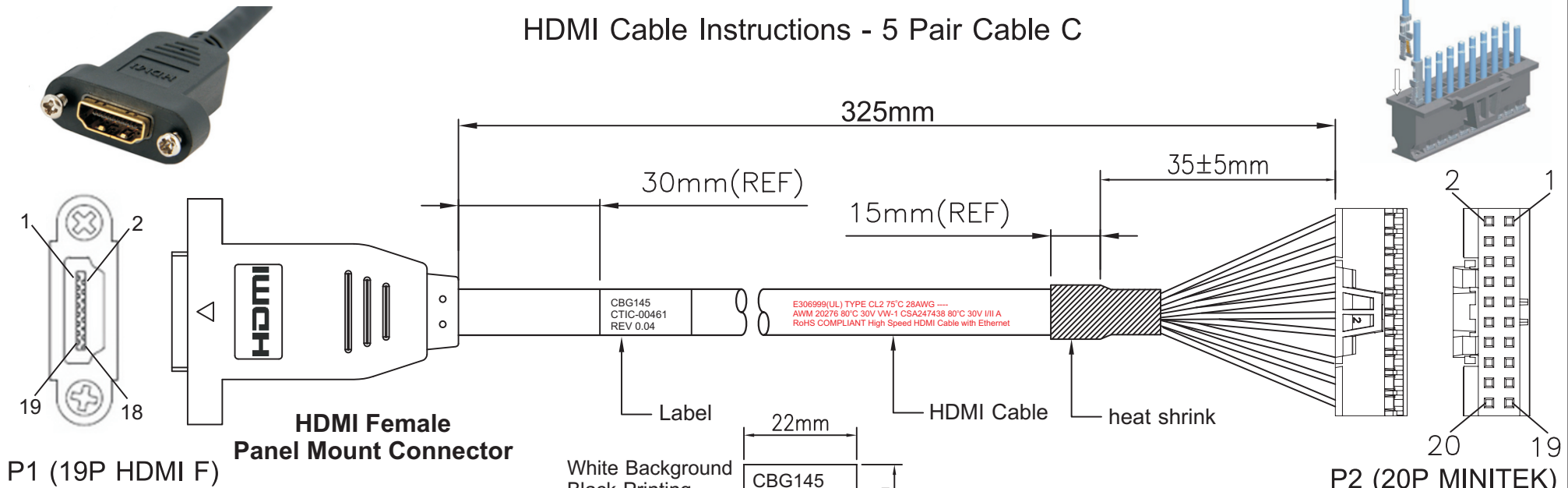
- Determine which Raw Cable Variant you have
 - Verify UL/CSA Text Matches Drawing
 - Check Connectivity of Pairs 1, 2, 3 to Validate Colours
- Cable is made from RoHS compliant components, must be HDMI compliant and wires must be 26-30 AWG
- P1- Any HDMI Female Panel Mount connector/cable equivalent can be used including:
 - Startech PN: HDMIPNLFM3 << Preferred Cable (Colour Matching on Left)
 - Adafruit PN: 978
 - Cable Leader PN: HM112-1203
 - L-com PN: PMHDMF-0.5
- P2 - Must use a FCI PN:10073599-020LF connector, along with required FCI crimps PN:77138
- Two twists per pair are required at P2 end of cable

Revision History

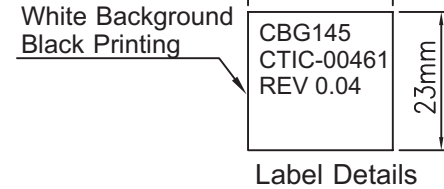
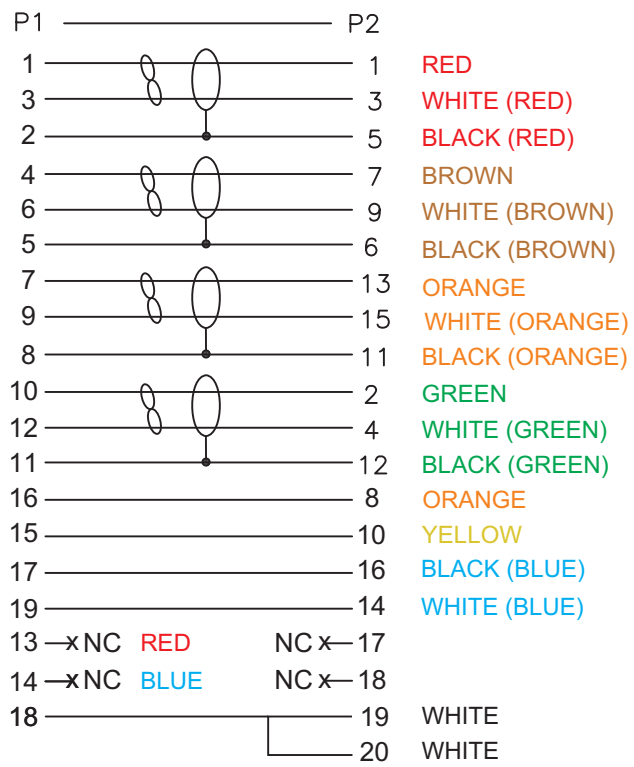
Revision	Description
0.01	Connected HDMI +5V Power to FCI Pins 19/20
0.02	Added Secondary Drawing (5 Pair vs 4 Pair)
0.03	Fixed Label Details on Cable
0.04	Added New Cable Variants

 Connect Tech Inc. Embedded Computing Experts	
Part #:	CTIC-00461 / CBG145
Drawn By:	Tomas Chester
Date:	2017/09/12
Revision:	0.04

HDMI Cable Instructions - 5 Pair Cable C



PINOUT TABLE




Assembly Notes

- Determine which Raw Cable Variant you have
 - Verify UL/CSA Text Matches Drawing
 - Check Connectivity of Pairs 1, 2, 3 to Validate Colours
- Cable is made from RoHS compliant components, must be HDMI compliant and wires must be 26-30 AWG
- P1- Any HDMI Female Panel Mount connector/cable equivalent can be used including:
 - Startech PN: HDMIPNLFM3 << Preferred Cable (Colour Matching on Left)
 - Adafruit PN: 978
 - Cable Leader PN: HM112-1203
 - L-com PN: PMHDMF-0.5
- P2 - Must use a FCI PN:10073599-020LF connector, along with required FCI crimps PN:77138
- Two twists per pair are required at P2 end of cable

Revision History

Revision	Description
0.01	Connected HDMI +5V Power to FCI Pins 19/20
0.02	Added Secondary Drawing (5 Pair vs 4 Pair)
0.03	Fixed Label Details on Cable
0.04	Added New Cable Variants

 Connect Tech Inc. Embedded Computing Experts	
Part #:	CTIC-00461 / CBG145
Drawn By:	Tomas Chester
Date:	2017/09/12
Revision:	0.04