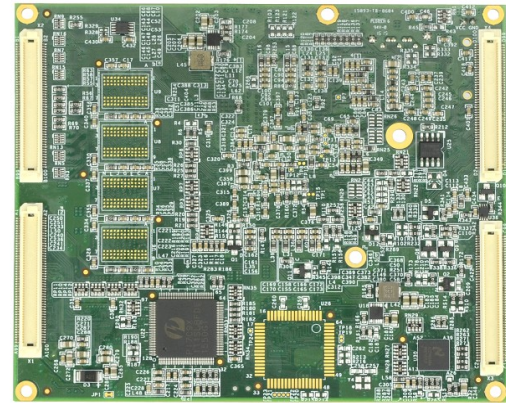
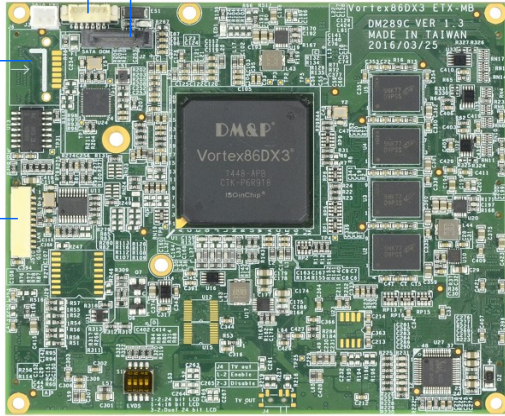


# VDX3-ETX

1GB/4USB/2COM/VGA/LVDS/  
LAN/AUDIO/IDE/I<sup>2</sup>C

JTAG SATA DOM



X2

X3

X1

X4

SATA DOM  
(Horizontal Type  
- Optional)

Giga LAN

## Specification

<b>Processor</b>	DM&P SoC CPU Vortex86DX3 - 1GHz L1: 16K I-Cache, 32K D-Cache, L2: 512KB Cache	<b>Operating Temp.</b>	-20°C ~ +70°C -40°C ~ +85°C (Optional)
<b>RAM</b>	512MB/1GB/2GB DDR3 Onboard	<b>OS Support</b>	DOS, Windows CE6.0/CE7.0/XP Professional/ Embedded Standard(XPE)/Embedded Standard 7 POS Ready (WePOS), Embedded Linux, X-Linux, QNX, Vxworks, and FreeBSD
<b>BIOS</b>	AMIBIOS		
<b>Watchdog Timer</b>	Software programmable from 30.5µs sec. to 512 sec. x 2 sets		
<b>Display</b>	Integrated 2D VGA chip with Dual Display Support (VGA + LVDS) Share 16MB to 256MB system memory 18/24-bit Single channel LVDS 24-bit Dual channel LVDS (Optional) VGA: Maximum resolution up to 1920x1080 LVDS(Single) Maximum resolution up to 1024x768 LVDS(Dual) Maximum resolution up to 1920x1080	<b>Ordering Information</b>	
<b>LAN</b>	Realtek 8111F 10/100/1000Mbps (Default 10/100 mode)	<b>VDX3-ETX-53IS</b>	Vortex86DX3 ETX Module with 512MB DDR3
<b>Audio</b>	HD Audio	<b>VDX3-ETX-74IE</b>	Vortex86DX3 ETX Module with 1GB DDR3
<b>PWM</b>	None	<b>VDX3-ETX-74IE-H</b>	Vortex86DX3 ETX Module with 1GB DDR3 and Horizontal SATA Connector
<b>Optional Interface</b>	None	<b>VDX3-ETX-75IE</b>	Vortex86DX3 ETX Module with 2GB DDR3
<b>I/O interface</b>	SATA x1 Enhanced IDE (UltraDMA-100/66/33) x1 Serial Port x2 USB (Ver 2.0) x4	<b>VDX3-ETX-75IE-H</b>	Vortex86DX3 ETX Module with 2GB DDR3 and Horizontal SATA Connector
<b>Connector</b>	SATA 7-pin for SATA x1 1.25mm 10-pin box header for GbE x1	<b>VDX3-ETX-I-DEV</b>	Carrier Board for VDX3-ETX Module
<b>Power Requirement</b>	Single Voltage +5V@ (TBD)	<b>Heatspreader-ETX-D3T</b>	2mm height heatspreader
<b>Weight</b>	110g	<b>Heatsink-ETX-D3T</b>	15mm height heatsink
<b>Dimensions</b>	95mm x 114mm (3.7 x 4.5 inches)		

# VDX3-ETX

1GB/4USB/2COM/VGA/LVDS/  
LAN/AUDIO/IDE/I<sup>2</sup>C

## Block Diagram

