

# PRTG NETWORK MONITOR



## Simplify your day with PRTG

Monitor your entire IT infrastructure with PRTG Network Monitor. You have full insight into your network and its performance to ensure that all business-critical components of your IT infrastructure run smoothly.





## One Solution for Everything

View your entire network, your systems and your applications in a single, comprehensive solution.

- Performance and availability
- Hardware and applications
- Virtual environments, email, web, storage, printers, etc.
- Monitor multiple locations with a single installation



## Smart and Easy Monitoring

You'll be up and running within minutes, without frustrating, complicated configuration.

- Smart setup and auto-discovery for a quick start
- Predefined sensors/checks for most common devices
- Comprehensive and user-friendly alerts and notifications
- Custom dashboards/maps for a high-level overview



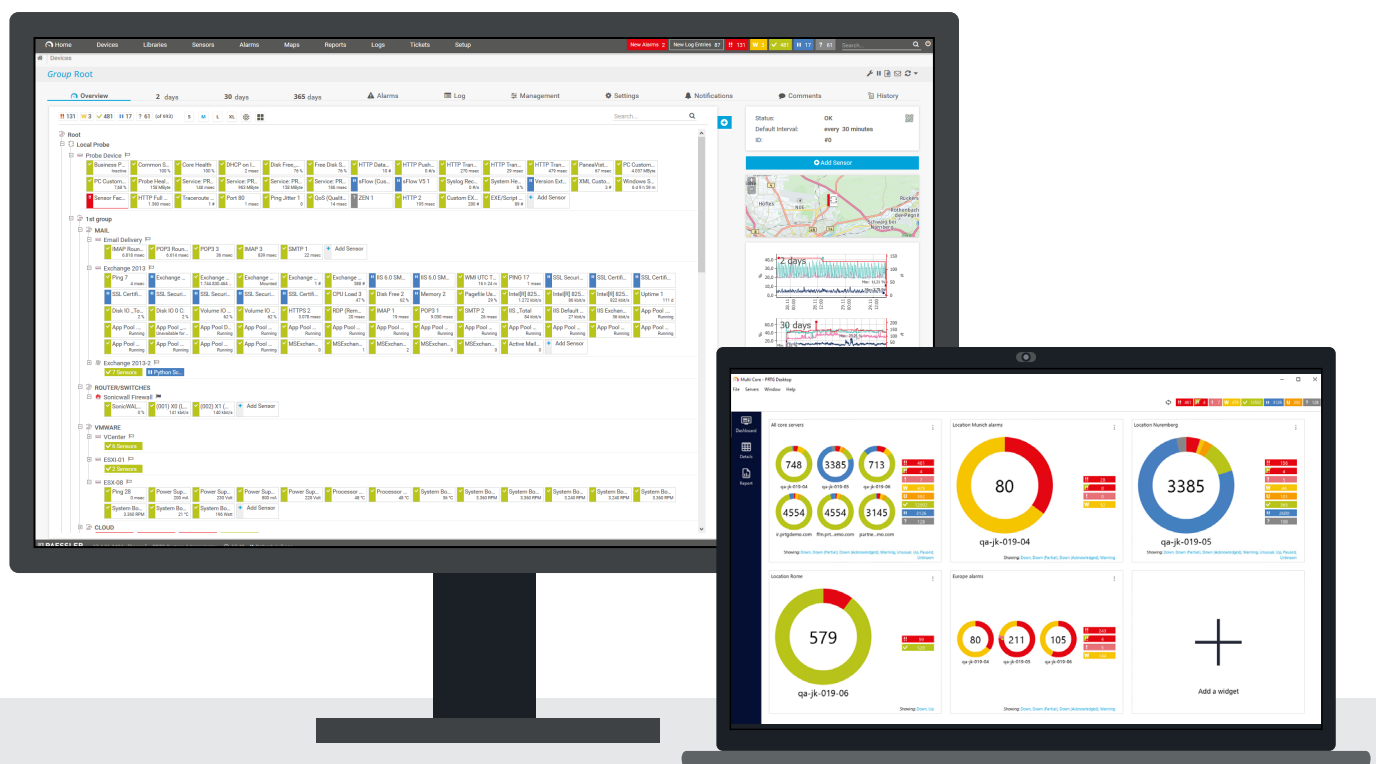
“We chose PRTG over competing monitoring products as it could handle monitoring across the full estate of hardware we own. It can monitor all the applications and operating systems we have.”

Ben Tyson, Unite Group



“PRTG was easy to deploy, easy to maintain and most importantly, lovely to work with. PRTG is my favorite tool.”

Daniel Sadavoy, Jameson Bank





## Customize Your Monitoring

Easily adjust PRTG Network Monitor to your individual requirements.

- Optional API and custom sensors for easy integration of custom devices and applications
- Create multi-layer custom dashboards
- Select from multiple GUIs: browser, PRTG Desktop app for Windows and macOS, or mobile apps for iOS and Android
- PRTG Desktop with bird's eye dashboard of multiple servers



“PRTG offers the right combination of predefined queries and flexible options. This makes PRTG ideal for comprehensively and reliably monitoring.”

Christian Miceli, Bosch Rexroth



## Fair and Simple Licensing

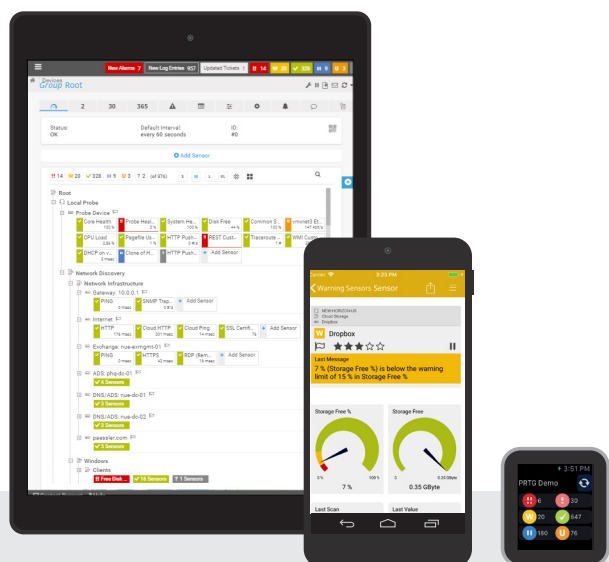
PRTG has a clear, straightforward licensing structure and its pricing is optimized for networks of all sizes.

- No add-ons, no modules – every feature is included in each license
- Multi-location monitoring and failover cluster included
- Fair upgrade model – just pay the price difference



“PRTG satisfied every one of our requirements. Forsyth needed custom sensors to monitor some of its more difficult devices and applications and to simplify the monitoring of complex systems.”

James Harden, Forsyth County Schools



### PRTG 500

500 sensors  
1 server installation  
Perpetual license

### PRTG 1000

1,000 sensors  
1 server installation  
Perpetual license

### PRTG 2500

2,500 sensors  
1 server installation  
Perpetual license

### PRTG 5000

5,000 sensors  
1 server installation  
Perpetual license

#### BEST VALUE

### PRTG XL1

Unlimited sensors  
1 server installation  
Perpetual license

### PRTG ENTERPRISE

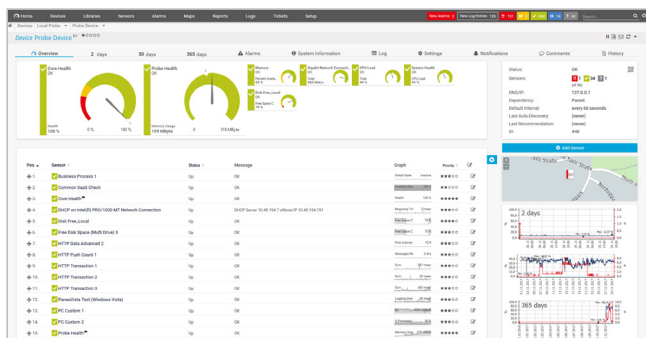
Unlimited sensors  
Unlimited server installations  
Subscription license

See our prices online: [www.paessler.com/prices](http://www.paessler.com/prices)

# Feature Overview

## MONITORING THE EASY WAY

- Agentless monitoring (not impacting monitored devices)
- Integrated database, mail server, and web server
- “Smart Setup” configuration wizard
- Auto-discovery – immediate visualization of discovered devices
- Preconfigured templates for common devices and applications
- Automatic software updates
- Simple and fair licensing model including an easy upgrade path



Drill down for details

## DATA PUBLICATION

- Drag & drop map editor for clear and powerful individualized dashboards
- Integrated reporting engine with delivery as HTML, PDF, or CSV
- Documented API for custom data export
- Free apps for iOS and Android
- Powerful interactive web interface
- PRTG Desktop app (Windows/macOS) for viewing multiple PRTG installations in one dashboard



Your data center at a glance

## FLEXIBLE AND RELIABLE ALERTS

- Alerts for individually configured criteria
- Various notification methods (email, SMS, Slack, Microsoft Teams, push notifications, HTTP request, exe, script, syslog, etc.)
- Scheduled and customizable reports (HTML, PDF)
- Detailed log files about all activities and results
- Internal ticket system

## MONITORING OF “EVERYTHING” WITH A SINGLE SOLUTION

- Support for all common protocols (SNMP, WMI, ICMP, HTTP, MQTT, SOAP, SSH, FTP, SMTP, POP3, DICOM, HL7...)
- Support for NetFlow v5/v9, sFlow, jFlow, IPFIX, and packet sniffing
- Monitoring of hardware, software, virtual environments, and applications
- Out-of-the-box support for leading IT vendors (Cisco, VMware, Hyper-V, Microsoft, HPE, Oracle, Juniper, HP, Amazon CloudWatch, Dell, APC, NetApp, Nutanix, Fujitsu...)
- Agentless monitoring for Windows, Linux, and macOS
- Flexible import of MIB data files of all vendors
- RESTful API and custom sensors for monitoring non-standard devices and applications
- Event log monitoring
- Monitoring of multiple sites with one installation/license
- Suitable for all industry verticals

## SOFTWARE ARCHITECTURE

- Designed for networks of all sizes
- Integrated database optimized for monitoring data (no database server required)
- Historic monitoring data stored in original intervals (raw data, not summarized)
- Failover cluster functionality included

## LICENSING AND SYSTEM REQUIREMENTS

- Get started with 100 free sensors
- All features included in every license, no add-ons, no modules
- Upgrade to higher licenses by only paying the price difference
- In-house support by network engineers and developers
- Runs on Windows client and server operating systems
- Runs with current versions of common browsers for the PRTG web interface
- Runs on physical, virtual, and cloud environments such as Amazon Web Services and Microsoft Azure



GET YOUR  
FREE TRIAL!  
[www.paessler.com](http://www.paessler.com)

All rights for trademarks and names are property of their respective owners.

Paessler AG · [info@paessler.com](mailto:info@paessler.com) · [www.paessler.com](http://www.paessler.com)

004511/202003