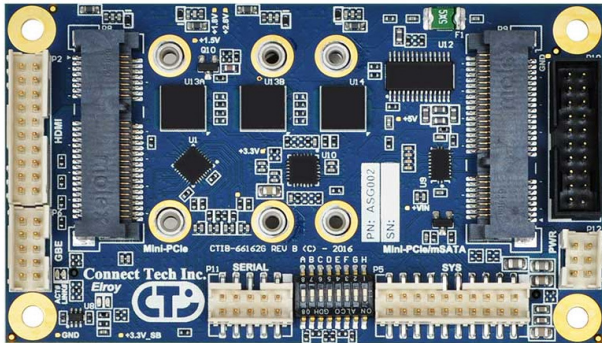


Elroy is a low cost and small form factor carrier board designed for rugged environments.

Designed to match the NVIDIA® Jetson™ TX2, TX2i, or TX1 module form factor, the Elroy's design includes Dual x2 MIPI CSI-2 Video Inputs, Mini-PCIe/mSATA expansion, HDMI Video, USB 3.0 and 2.0, and two Serial Ports for RS-232/485.



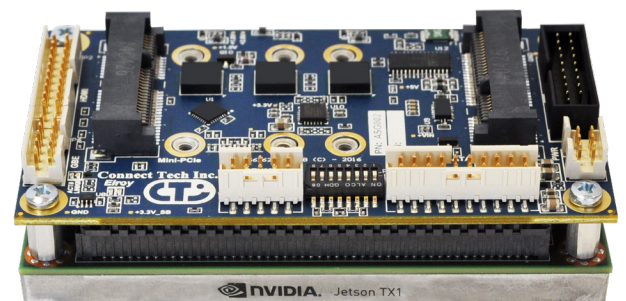
With locking pin-header connectors, solder in standoffs, and industrial temperature range components, the Elroy is going places.

## FEATURES

- ✓ Extremely Small Size: 87mm x 50mm
- ✓ Extended Temperature Range: -40°C to +85°C
- ✓ Head-to-Head Dual Mini-PCIe
- ✓ Dual x2 MIPI CSI-2 Connectors

## SPECIFICATIONS

<b>Compatibility</b>	NVIDIA Jetson TX2, NVIDIA Jetson TX2i, NVIDIA Jetson TX1
<b>Dimensions</b>	87mm x 50mm (3.425" x 1.968")
<b>Mini-PCIe</b>	1x Full Size or 2x Half Size Mini PCIe
<b>mSATA</b>	1x mSATA Half or Full Size (Use of Full Size Removes Secondary Mini-PCIe Slot)
<b>Display</b>	1x HDMI (Supports up to HDMI 2.0 UHD 4K [2160p] at 60Hz)
<b>Serial</b>	1x USB 3.0 (Integrated USB 2.0) 1x USB 2.0
<b>Ethernet</b>	1x Gigabit Ethernet (10/100/1000)
<b>Audio</b>	1x HDMI Integrated Audio
<b>SD Card</b>	1x microSD
<b>Video Inputs</b>	2x 2-Lane (x2) MIPI CSI 2.0
<b>Misc</b>	SPI, I2C, GPIO
<b>Power Requirements</b>	+9V to +14V DC
<b>Operating Temperature<sup>1</sup></b>	-40°C to +85°C (-40°F to +185°F)



Shown with Jetson TX1 module

[1] The Jetson TX2/TX1 Module is rated for -25°C to +80°C (measured at thermal heat plate)