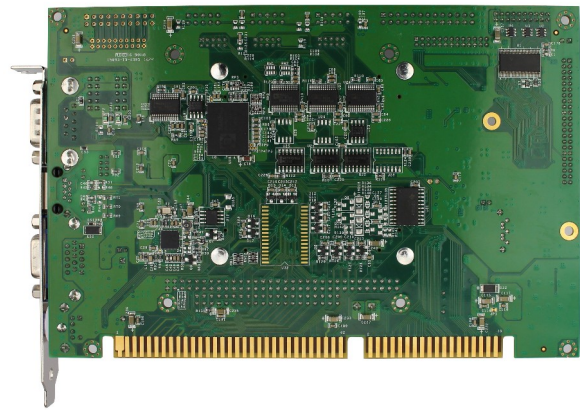
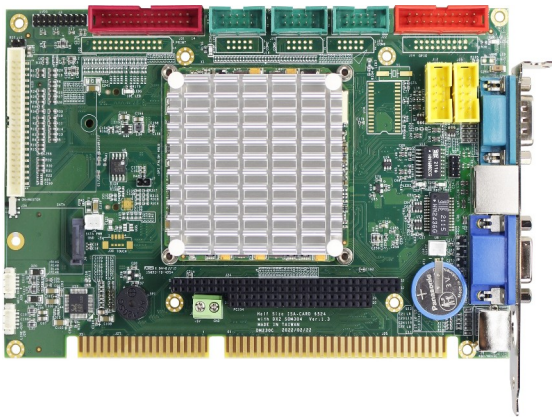


VDX3-6724-V2



Specifications

CPU	DM&P SoC Vortex86DX3 1GHz, L1: 32K I-Cache, 32K D-Cache, L2 Cache: 512KB			
RAM	1/2GB DDR3 Onboard			
BIOS	AMI BIOS			
Bus	PC/104 Standard Compliant			
Display	Integrated 2D VGA chip with Dual Display Support (VGA + TTL / VGA + LVDS) VGA: Maximum resolution up to 1920 x 1080 @ 60Hz LVDS: Maximum resolution up to 1024 x 768 @ 60Hz, single channel 24-bit LVDS			
LAN	Integrated 10/100Mbps Ethernet x1	Realtek 8111H GbE x1		
Disk Support	SATA DOM	Compact Flash (Optional)	Onboard eMMC 1GB (Optional)	
I/O Interface	RS232 x2 16-bit GPIO x1 PS/2 touch controller x1 (Optional)	RS232/485 x2 Parallel x1 HD Audio	USB (ver. 2.0) x4 DOS hot SWAP x1 (Optional)	
Connectors	2.54mm 26-pin box header for Parallel x1 2.54mm 10-pin box header for RS232 x3 2.0mm 44-pin box header for LCD x1 1.25mm 4-pin wafer connector for Line-out/MIC-in x2 15-pin D-Sub female connector for VGA x1 Terminal block for DC input x1	2.54mm 20-pin box header for GPIO x1 2.54mm 2-pin pin header for Reset x1 2.0m 20-pin pin header for LVDS x1 7-pin SATA connector for SATA DOM x1 9-pin D-Sub male connector for RS232 x1 PS/2 connector for Keyboard/Mouse x1	2.54mm 10-pin box header for USB x2 2.54mm 104-pin PC/104 connector x1 2.0mm 8-pin pin header for Ethernet x1 2-pin box header for DC +5V output z1 Type I/II Compact Flash slot x1 (Optional) RJ45 connector for GbE x1	
Power Requirement	DC+5V @ 1A (Typical)			
Operating Temperature	-20°C - +70°C (Single Core) -10°C - +60°C (Dual Core)	-40°C - +85°C (Optional for Single Core) -20°C - +70°C (Optional for Dual Core)		
Dimension	184 x 122mm			
Weight	180g			
O/S Support	Windows 7 Windows XP Professional POS Ready (WePOS)	Windows Embedded Standard 7 Windows Embedded 2009 QNX	Windows Embedded Compact 7 Linux VxWorks	DOS Free BSD

Ordering Information

PART NO.	CPU	DRAM (DDR3)	Storage	Display	LAN	GbE	USB (ver. 2.0)	RS232	16-bit GPIO	Parallel	Audio	Bus
VDX3-6724-V2-1G	1GHz	1GB	SATA	VGA, LVDS, LCD	1	1	4	4	1	1	Line-out/MIC-in	PC/104
VDX3-6724-V2-CF-1G	1GHz	1GB	SATA Compact Flash	VGA, LVDS, LCD	1	1	4	4	Not Supported	Not Supported	Line-out/MIC-in	PC/104
VDX3-6724-V2-2G	1GHz	2GB	SATA	VGA, LVDS, LCD	1	1	4	4	1	1	Line-out/MIC-in	PC/104
VDX3-6724-V2-CF-2G	1GHz	2GB	SATA Compact Flash	VGA, LVDS, LCD	1	1	4	4	Not Supported	Not Supported	Line-out/MIC-in	PC/104
CABLE-6724-SET	Cable set for VDX3-6724											
CABLE-6724-CF	Cable set for VDX3-6724-CF											



Authorized Distributor

wldsystems.com

sales@wldsystems.com

800-548-2319

919-545-2500

220 Chatham Business Drive
Pittsboro, NC 27312