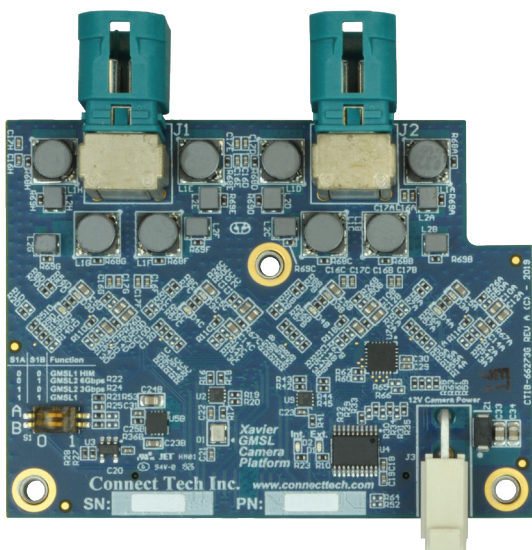


GMSL camera platform is an expansion board that allows up to 8 cameras to be connected to the Jetson AGX Xavier module.

Power to the cameras is provided by PoC (Power over Coax) so all the data, control signals, and power are sent through a single 50 Ohm Coaxial cable. This allows for flexibility in cable routing and ease of installation in automotive applications. The main power for the board comes from the Camera Expansion Header.



Since many different types of GMSL cameras are available, the JCB002 has user selectable options to interface with either GMSL1 or GMSL2 protocols at different operating frequencies.

## FEATURES

- ✓ GMSL1 or GMSL2 protocols
- ✓ Internal or External Camera power
- ✓ Power over Coax
- ✓ Software power cycle
- ✓ Compact size
- ✓ 4x mini coax connector
- ✓ Input voltage protection

## SPECIFICATIONS

<b>Size</b>	75 mm x 57 mm (2.95" x 2.24")	<b>Weight</b>	50 g (1.76 oz)
<b>NVIDIA Xavier Connection (Uplink)</b>	1x High Density Connector Camera Board will mate to the NVIDIA Jetson "Camera Expansion Header"	<b>(GMSL) Camera Inputs</b>	8x Total (GMSL2/GMSL1)
<b>Deserializer</b>	Maxim MAX9296A	<b>MIPI Output</b>	A single 4-lane MIPI CSI-2 v1.3 output from each Deserializer (16-lanes total)
<b>Camera Input Connectors</b>	2x MATE-AX Quad Coax Connectors Breakout cables to FAKRA available	<b>PoC (Power-Over-COAX)</b>	All 8 cameras will be sourced Power-Over-COAX from JCB002
<b>Power</b>	Can be directly powered from Camera Expansion Header or External +12V Input	<b>Operating Temperature</b>	-40°C to +85°C (-40°F to +185°F)
<b>Warranty and Support</b>	1 Year Warranty and Free Technical Support		



Authorized Distributor

[wldsystems.com](http://wldsystems.com)

[sales@wldsystems.com](mailto:sales@wldsystems.com)

800-548-2319

919-545-2500

220 Chatham Business Drive  
Pittsboro, NC 27312