

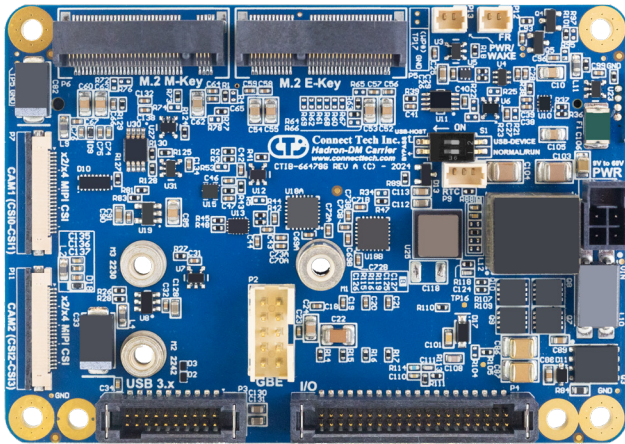


The Hadron-DM Carrier Board for Jetson Orin™ NX is an ultra small, rugged and feature rich carrier for AI Computing at the Edge.



Just slightly larger than the Jetson™ SODIMM module, Hadron is ideal for vision applications, inference, and unmanned payloads. Hadron-DM features Dual MIPI CSI-2 connectors for greater versatility.

Since the Hadron-DM carrier board is compatible with the Jetson Orin™ NX, and Jetson Orin™ Nano modules, users can transition between modules depending on their AI processing requirements.



Hadron's design includes a wide input voltage, rich I/O set as well as locking IO connectors optimized for rugged environments.

## FEATURES

- ✓ Rugged latching connectors
- ✓ GPIO, PWM, I2C, RS-232, 3.3V UART, SPI
- ✓ 2x USB3.1, 1x GbE, 2x 4-lane MIPI CSI2, 1x 2242/2230 NVMe, 1x M.2 E-Key (WiFi/BT)
- ✓ Wide Input Range: +9V to +60V (+12V-+48V Nominal)

## SPECIFICATIONS

<b>Ethernet</b>	1x 1000BASE-T Ports (Connector: Positive Locking Pin Headers)	<b>USB</b>	2 x USB 3.1 (Gen 1) 1x USB 2.0 Programming Port  (HD pin headers)
<b>Dimensions</b>	82.6mm x 58.8mm (3.25" x 2.31")	<b>Storage</b>	1x 2242/2230 NVMe (M-Key)
<b>MIPI Cameras</b>	2x 4-lane MIPI CSI-2 - 22-pin FPC Connector	<b>Misc Interfaces</b>	1x 3.3VTTL UART (CONSOLE) 2x RS-232 Serial Ports 4x GPIO – 2x PWM Capable 1x 3.3V I2C 1x 3.3V SPI Power Output 3.3V, 5V (Max 500mA Each)
<b>Operating Temperature</b>	-25°C to +85°C (-13°F x 185°F)	<b>Expansion</b>	1x M.2 E-Key for WiFi/BT
<b>FAN</b>	1x 4-pin Fan Connector (5V 1x4 Picoblade)	<b>Power Input</b>	Wide Power Input: +9V to +60V DC (+12V to +48V DC Nom.)
<b>Power - RTC Battery</b>	3-Pin RTC Battery Connector	<b>Weight</b>	56g
<b>Warranty and Support</b>	1 Year Warranty and Free Support		



Specifications subject to change without notice. ©2024 Connect Tech Inc. All trademarks are property of their respective holder. CTIX-00224(0.02) - 2024-05-27



Authorized Distributor

[wdsystems.com](http://wdsystems.com)

[sales@wdsystems.com](mailto:sales@wdsystems.com)

800-548-2319

919-545-2500

220 Chatham Business Drive  
Pittsboro, NC 27312