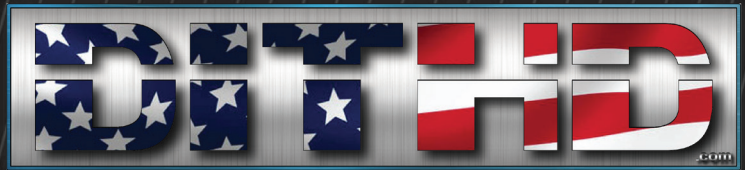


# RD1U

## C-CLASS



[www.DITHD.com](http://www.DITHD.com)

IDEAL FOR  
SHORT DEPTH  
& LIGHT WEIGHT  
APPLICATIONS!



SERIES

## RD1U - CAT17

When short depth and light weight are strict guidelines, the CAT17 Series are the perfect fit. This series will fit into a 17" deep rack or transit case, weighs in at a mere 17 lbs. and uses a pass-through cabling system. The RD1U-C Class is available with multiple keyboard, controller and monitor options.

DIT: THE INDUSTRY LEADER IN RACK MOUNT DISPLAY SOLUTIONS



Note: The CAT17 is shown here with its added series features.

FEATURES

- (A) LED Back Lit LCD
- (B) Keyboard/Pointer
- (C) Front Face D8 Shown
- (D) Solid Bearing Slides
- (E) Cage Style Cable Guide
- (F) Power Brick Cradle
- (G) Optional Video Ports
- (H) Locking Power Conn.
- (I) Transit Case Arms
- (J) Pass-Through Port

WHY CHOOSE THE CA17 or CAT17?

- Rugged Folding Clamshell Design
- Light Weight Aluminum Construction
- Flexible Keyboard & Pointer Options
- Integrated Cable Management
- Mounts in Standard 19" Rack
- Fits Cabinets Depths from 17" - 25"
- Built-in Slide Rails w/Telescoping Arms

DISPLAYS

17L SXGA 1280 x 1024 (Max Res)

- Backlight: 350 NITS, LED
- Operational Temp: -30\* to 85\* C

173W FHD 1920 x 1080 (Max Res)

- Backlight: 400 NITS, LED
- Operational Temp: 0 to 70°C

▶ Additional Panel Options Available  
(Contact Sales Rep for more [CAT17 Series Options](#))

- High Bright, Touch Screen and Optical Bonding Options Available

KEYBOARDS/POINTERS



- A: Cherry w/Track Ball



- O: Cherry w/Glide Pad

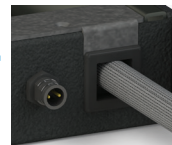


- QN: Rugged w/Touch Pad

▶ Series Keyboard/Pointer Options Available  
(Contact Sales Rep for more [CAT17 Series Options](#))

PASS THROUGH PORT

- All DVI, VGA, HDMI or Display Port cables passed through this hole.

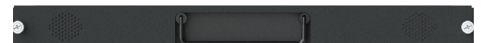


CONTROLLERS

- V35X Embedded Controller (New)  
Max Resolution: 1920 x 1200  
Input Options Available: VGA, DVI or HDMI, Display Port, Audio

▶ Additional Controller Options Available

FRONT FACES



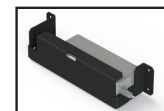
- E8: Thumbscrew, Colapsible Handle



- B3: Key Lock with 4" Wire Pull Handle

▶ Additional Front Face Options Available

CAT17 SERIES FEATURES



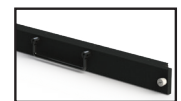
Power Brick Cradle



Transit Case Arms



Solid Bearing Slides



E8 Front Face

SPECIFICATIONS

- Dimensions: 1.75"(1U) x 19"W x 17"D
- Weight: 18 Lbs
- Power Consumption: 35 Watts  
(Values may vary depending on configuration)



SERIES <b>RD1U-CAT17</b>	DISPLAY <b>17L</b>	Project <b>DIT000x</b>	Rev <b>01</b>
RD1U-CAT17	17L, 173W, and more	Your Project Code	Revision Controlled

Custom Options Available On All DITHD Models.



DITHD 1357 Rocky Point Dr, Oceanside, CA 92056

760.599.9225 | sales@dithd.com | www.DITHD.com





Authorized Distributor

[wdsystems.com](http://wdsystems.com)

[sales@wdsystems.com](mailto:sales@wdsystems.com)

800-548-2319

919-545-2500

220 Chatham Business Drive  
Pittsboro, NC 27312