

# RDKB

## T-CLASS



[WWW.DITHD.COM](http://WWW.DITHD.COM)

Available with  
KVMs!



SERIES

## RDKB-Txx (Transit)

The RDKB-T series is our standard, rugged keyboard drawer. These lightweight keyboard drawers are built using our modular design philosophy. This enables a wide range of configurable options and drawer depths, giving you a tailor-made solution for almost any scenario. These options include keyboards, handles and hardware, as well as KVM switch backs.

DIT: THE INDUSTRY LEADER IN CONFIGURABLE RACK MOUNT SOLUTIONS





### FEATURES

- A** Multiple Keyboard and Mouse Options  
Low and High Cost Options, including Mouse Options
- B** Front Face  
Multiple Options, Including Key Locks and Thumbscrews
- C** Friction Slide Rails  
Military-Grade Rails with Infinite Stopping Points
- D** Cage-Style Cable Guide  
Integrated Cable-Organizing System

### WHY CHOOSE THE RDKB?

- Light Weight Construction
- Customizable Modular Design
- Transit Case Ready
- Protective Cage Cable Guide
- Built-in Slide Rails
- Adjustable/Telescoping Rear Arms

### FRONT FACE OPTIONS

- B3:** Key Lock Front Face with 4" Wire Pull Handle
- D8:** Thumbscrew with 5" Collapsible Handle
- Da7:** Thumbscrew w/ Flush Collapsible Handle & Speakers
- D1:** Thumbscrew w/ Pocket Pull Handle

Additional Front Face Options Available

### KEYBOARD/POINTERS



- **V1U (\$):** 103 Key Keyboard (PS2/USB) w/ Optical



- **R3/R3u (\$\$):** 103 Key Keyboard (PS2/USB) w/ Logic Tech Wireless Mouse



- **A2u Cherry (\$\$):** 88 Key Keyboard (USB) w/ cherry optical trackball w/ 2 buttons



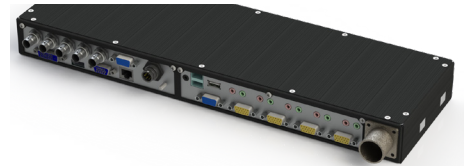
- **Ou Cherry (\$\$):** 88 Key Keyboard (USB) w/ glidepad

Additional Keyboard/Pointer Options Available

### KVM OPTIONS (T20, T24, T26)



- **E2u (\$\$):** 8-Port VGA, USB, PS2 Hybrid KVM



- **Ku (\$):** 4-Port VGA KVM



- **O3u (\$\$):** Aten 4-Port HDMI KVM

Additional KVM Back Options Available

### RDKB-Txx SERIES FEATURES

- Rapid Install, Milled Aluminium arm kits
- Custom Integrated Military-Grade Slide Rails
- Integrated Cable Guide System

### SPECIFICATIONS

- **Dimensions:**
- **Weight:**
- **Power Consumption:**

Values are approximate and vary based on configuration



SERIES: Class Depth Custom P.N. Revision  
**RDKB-T 17 .XXXXX .XX**  
 T20, T24, T26

► Custom Options Available On All DIT Models

DIT: Display Integration Technologies | The Worlds Most Configurable Monitors  
 1357 Rocky Point Dr. Oceanside CA, 92056 | 760.599.9225 | www.DITHD.com





Authorized Distributor

[wdsystems.com](http://wdsystems.com)

[sales@wdsystems.com](mailto:sales@wdsystems.com)

800-548-2319

919-545-2500

220 Chatham Business Drive  
Pittsboro, NC 27312